

SADDLEMEN®

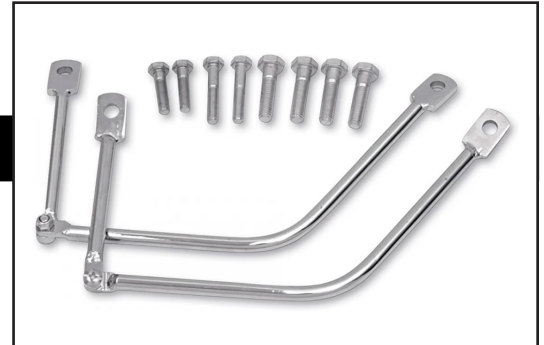
W W W . S A D D L E M E N . C O M

USER GUIDE & INSTALLATION INSTRUCTIONS

DESCRIPTION: Saddlebag Support Kit **PART NUMBER:** 3501-0345

FITMENT: Most metric cruiser models

Note: Turn signal relocation may be required on some bike models.



CONTENTS / PARTS INCLUDED:

Qty	Item	Qty	Item
1	Saddle Bag Support – right	1	Saddle bag Support – left
2	M10 x 70 hex bolt	2	M10 x 50 hex bolt
4	M8 x 30 hex bolt	4	M8 x 45 hex bolt
4	1/2" x 3/4" x M10 spacers	1	Installation instructions

IMPORTANT:

Please read these instructions completely before starting installation. All “NOTE,” “CAUTION” and “WARNING” notations are serious safety issues and should be read carefully. Possible injury to riders or damage to the motorcycle and/or accessory may result if improperly installed.

NOTICE TO DEALERS:

These instructions contain important information for future reference and should be given to the customer.

⚠ WARNING:

READ THESE INSTRUCTIONS THOROUGHLY BEFORE INSTALLATION!

Because of the variety of motorcycle configurations, other accessories, and the features and intended use of this Saddlemen accessory, there could be many different mounting options. You are responsible for the proper installation of this accessory on your motorcycle. Your attention to these installation instructions and recommendations will permit safe and proper use of this accessory. You must mount this accessory properly and securely before riding your motorcycle. If you lack the ability to safely and properly install this accessory, seek out a qualified motorcycle technician for assistance. During installation, support the motorcycle with a suitable stand or lift so it will not tip over and injure you, or damage the vehicle. Using or mounting this accessory improperly could result in a loss of control of the motorcycle which could result in damage to your motorcycle or other personal property, the property of third parties, and/or personal injury to yourself or others, up to and including death.

BE SURE TO THOROUGHLY READ AND CLOSELY FOLLOW THESE MOUNTING INSTRUCTIONS:

- For your safety, mount this kit and your saddlebags securely so they will not shift or move while riding. Make sure the accessories will not contact the controls, suspension, or any other moving parts of your vehicle.
- When using this or any accessory, do not exceed your saddlebag's Maximum Cargo Load Capacity, or your vehicle's Maximum Gross Vehicle Weight as listed on your vehicle or in the manufacturer's owner's manual.
- Continually check the security of this accessory at each stop as you ride. Hardware and straps on a motor vehicle can loosen during operation, so be sure to check these items frequently.
- If this accessory is ever damaged, do not use it until inspected by a professional motorcycle dealer. Replace immediately if it has damage that will prevent it from being properly secured to your vehicle or if it will not securely function as intended.
- If you do not understand the mounting instructions or this warning label DO NOT mount this accessory. Contact your local professional motorcycle dealer for assistance, or call the Saddlemen support line at (310) 638-1222.

DO NOT ATTEMPT TO USE THIS ACCESSORY IF:

- You do not understand these installation and use instructions,
- You do not understand any part of the accessory mounting system,
- You have any doubts as to the security of the mounting system.

If you have any concerns or questions, seek help at your qualified motorcycle dealer or call the Saddlemen support line at (310) 638-1222.

Remember: Motorcycling can be a dangerous activity. Installation of any accessory can increase your risk if it is not installed properly. You are responsible to install this accessory so it will not contact any portion of the drive train, suspension or steering, and will in no way interfere with the operation of your motorcycle.

3501-0345I (Rev 1 10-2023)



17801 SOUTH SUSANA ROAD, RANCHO DOMINGUEZ, CA 90221

PH: 310.638.1222

⚠ WARNING:

Remember: Motorcycling can be a dangerous activity. Installation of any accessory, including these bag supports, can increase your risk if not installed properly. You are responsible to install this accessory so it will not contact any portion of the drive train, suspension or steering, and so it will in no way interfere with the operation of your motorcycle.

To avoid injury, install while engine is cold.

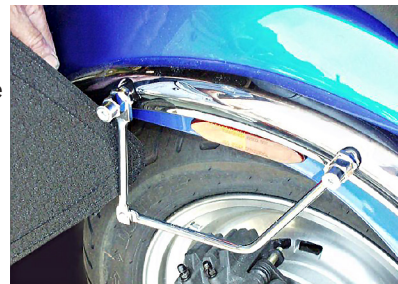
INSTALLATION:

This kit is designed to fit several different motorcycle models, and contains multiple length studs, which if installed incorrectly could interfere with the tire. When installing a stud through the fender, check to be sure that it does not extend inside the fender further than the original fastener. If it does it must be cut off, or exchanged for a shorter stud in the kit.

Work slowly and carefully to avoid scratching the fender.

The supports are designed to be installed with the staggered, offset bend facing outward from the bike, and the hinged corner towards the rear of the bike. Failure to install them properly may allow the saddlebags or the supports to contact the shock, wheel or other moving parts. You must check clearance of all components, with the bike under load, and ensure that the swing arm, belt/chain guard, brake components, etc. all clear the saddlebag supports when bike is operational.

- 1) Familiarize yourself with the location and arrangement of how the supports are to be mounted. Hold the supports next to the motorcycle to help visualize how they will be installed.
- 2) Installing one side at a time, remove the fender strut bolts.
- 3) Install saddlebag support using two of the bolts provided, as appropriate. Re-use stock washers.
- 4) Repeat the same installation process on the motorcycle's other side.
- 5) Check and adjust alignment and tighten both bolts securely.
- 6) We recommend using a thread sealant like Loctite or Vibratite on the saddlebag supports fasteners.



CAUTION:

Overloaded or overweight bags can move the supports inward. You must make sure these bag supports or any saddlebags will not come in contact with the motorcycle's exhaust, controls or drivetrain.

Failure to install any of these accessories properly may allow portions of a bag or its mounting straps to come into contact with the motorcycle's moving parts or controls. It is vital that you verify that neither the accessory, nor any of its parts can touch, or interfere with, other motorcycle components while the steering or suspension moves through its entire range of motion. Make sure that this accessory, mounting straps or hardware can not come into contact with the exhaust or any other component of the motorcycle, as other vehicle components may be damaged by contact with this accessory.

It is your responsibility to make sure the installation of this accessory does not create an unsafe or illegal condition. Check to be sure that all lights and safety reflectors are visible once your saddlebags are in place. If the bag blocks any side reflectors, place new reflectors on the exterior sides of the bags (reflectors with self-adhesive backing are available from motorcycle or automobile supply stores).

After 50 miles (80 kilometers) of riding, recheck your saddlebags and all mounting hardware to make sure that they are still tight and secure. Inspect the bags and their mounting hardware more often if you are riding your motorcycle in wet or rough conditions. Inspect all accessories and related hardware before and during each ride. A loose accessory and/or mounting hardware can interfere with the vehicle's operation and cause an unsafe riding condition.

LIMITED WARRANTY POLICY

SADDLEMEN LIMITED ONE-YEAR WARRANTY Saddlemen warrants its products for defects in materials, design or workmanship for a period of one year after retail purchase. Items that are defective will be repaired or replaced by Saddlemen at its sole discretion. Damage caused by improper use or improper installation is not a defect; therefore repair, replacement or shipping of a damaged accessory will not be covered under this warranty. This limited warranty contains other provisions and conditions, so please refer to the Warranty Policy that was provided with your Saddlemen product or visit www.saddlemen.com for additional information. You can count on Saddlemen's quality, innovation, service and style. If for any reason you are not satisfied with the performance of your Saddlemen products, please contact the Saddlemen support line at (310) 638-1222.

3501-0345I (Rev 1 10-2023)